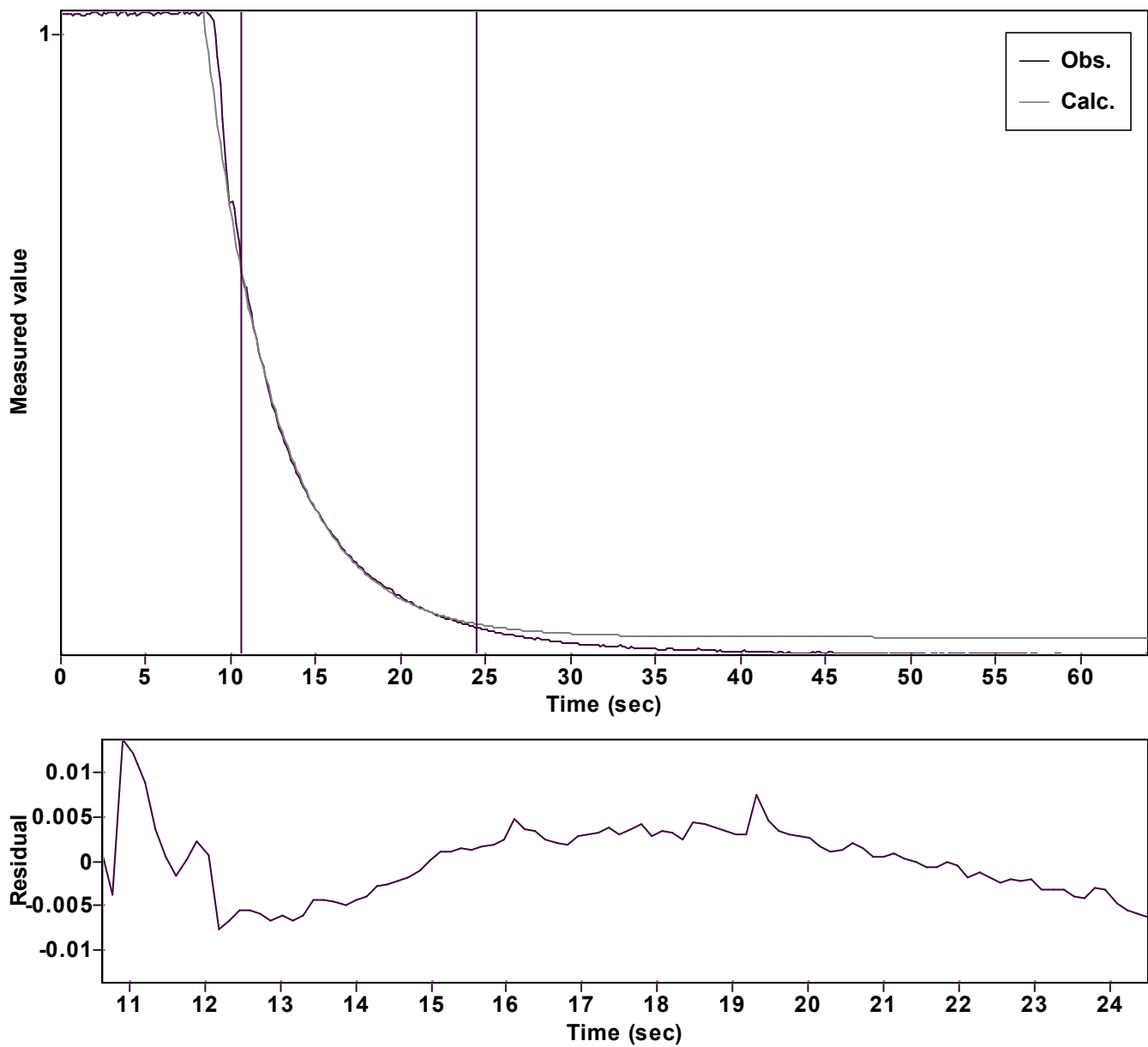


Evaluation of kinetic data with ExpoFit V 1.3

Graph



Function: y = A exp (-kx) + C (Exponential decrease)		Reference point: 0 (Zero)	
Amp A = 7.583924439378166 Â± 0.151635920826405		Quality r ² = 0.9993064872805	
Rate k = 0.240564903346717 Â± 0.001860493473238		Data points = 100 of 458	
Final C = 0.030446232253354 Â± 0.001293287414464		Conversion = 55.2 %	
Start at position: 10.64 / 0.61776 (40.5 %)		End at position: 24.502 / 0.04489 (95.7 %)	
ExpoFit file: Vinyl azide_4 equiv_fur+Nu_c01_000 (Data-Extract Date of file: xp 08/11/2025 23:51:06			
Source file: Vinyl azide_4 equiv_fur+Nu_c01_000 (Data-Extract Date of file: xt 08/11/2025 23:45:36			
Type of source file: Universal ASCII - file data			
2007 by Dr. Kempf		Date of print: 15/12/2025 18:20:48	